

EVK-CK

Capture & Process Evaluation Kit

Product description

Capture & Process is u-blox' market-proven software GPS technology that solves the 2 main problems faced by real-time GPS: the solution is ultra-fast, capturing a position in 0.2 seconds, and extremely low-power, allowing weeks or months of battery life. Capture & Process achieves these results in two simple steps:

1. Capture raw GPS signal data immediately,
2. Process it to obtain a position fix at a convenient later time (on a PC or Mac)

The EVK-CK is a comprehensive kit designed to make evaluation of u-blox' Capture & Process (C&P) technology simple and enjoyable. The kit includes a KATO capture device which is used to capture and store the raw GPS data. KATO is particularly effective in photo geotagging applications and can be attached to a camera via a hotshoe

connector, in which case a capture is taken automatically with every photograph. Alternatively, KATO can be used standalone, with captures triggered by pressing its built-in capture button. EVK-CK includes two software applications for processing the captures:

- **Snappr:** u-blox' technical evaluation software for the PC which displays locations on a map and provides information about the received GPS signals.
- **Taggr:** a photo geotagging application for PC or Mac which demonstrates how commercial applications can be built on top of Capture & Process.

Both applications are based on u-blox' YUMA API. This is the interface to the YUMA software GPS processing engine and Historic Assistance Service, which are at the heart of Capture & Process.

Highlights

- KATO capture device
 - Can be used as a standalone data logger or attached to a camera hot-shoe for photo geotagging
 - Captures locations in 0.2s
 - Stores up to 2000 captures
 - Battery life of weeks/months
 - Recharged via USB
- Snappr technical evaluation application (PC)
- Taggr photo geotagging application (PC or Mac)



The EVK-CK includes a KATO capture device for use as photo geotagger or low-power GPS datalogger

Experience Capture & Process in just 4 simple steps

1. Charge the KATO by connecting it to a PC via the USB cable. For a full charge leave until the LED shows green (this will take a maximum of 2 hours) although just a few minutes of charging is enough for a quick test.
2. During charging, run the Snappr software. Simply starting the application is enough to configure the device for initial use.
3. Disconnect the device, go outside and capture locations, either by pressing the KATO 'Capture' button or simply by taking photos with the KATO attached to a camera hot-shoe
4. Reconnect the KATO to the PC via USB, run Snappr and press the 'Process' button to see your captured locations

Kit includes

- KATO capture device
- ISO hot-shoe connector for standard cameras
- Hot-shoe adapter for Sony/Konica/Minolta cameras
- USB cable
- Installation CD for EVK-CK software and documentation

Supported platforms

Snappr: Windows XP (SP2), Vista (SP1) or Windows 7

Taggr: Windows XP (SP2), Vista (SP1), Windows 7 or (Intel) Mac OS X 10.4 and above

Note: An internet connection is required to install the EVK-CK software and also to process captures with Snappr or Taggr.



KATO capture device with hot shoe connector and Sony / Konica / Minolta adapter

Snappr technical evaluation software



Snappr is an interactive PC application for processing the raw GPS data captures and visualising the results. Position fixes are shown on a map and related GPS information is displayed e.g. satellite constellation, C/N levels, DOP etc. Snappr includes facilities to configure the KATO device and erase captures or archive them to the PC.

Ordering information

EVK-CK Capture & Process Evaluation Kit

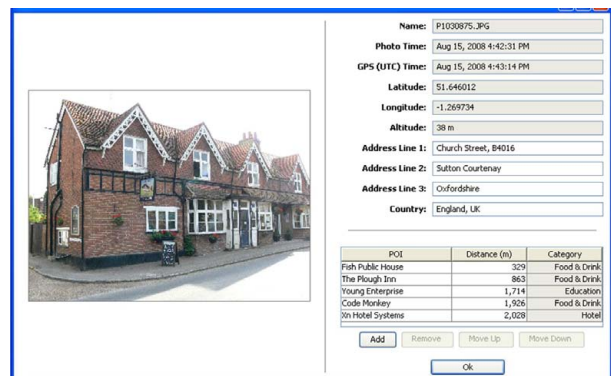
Please visit the "Capture & Process" section of our website at <http://www.u-blox.com/en/capture-process.html> for further technical details.

Legal Notice

u-blox reserves all rights to this document and the information contained herein. Products, names, logos and designs described herein may in whole or in part be subject to intellectual property rights. Reproduction, use, modification or disclosure to third parties of this document or any part thereof without the express permission of u-blox is strictly prohibited.

The information contained herein is provided "as is". No warranty of any kind, either express or implied, is made in relation to the accuracy, reliability, fitness for a particular purpose or content of this document. This document may be revised by u-blox at any time. For most recent documents, please visit www.u-blox.com.
Copyright © 2009, u-blox AG

Taggr photo geotagging application



Capture & Process is uniquely suited to photo geotagging and the Taggr application was created to demonstrate this. Processing of captures and management of the KATO device is similar to Snappr. Taggr also includes extensive support for tagging photos with location information. The basic GPS latitude/longitude information is enhanced with the nearest street, nearest town, region and country. Taggr embeds all of this location metadata directly into JPEG photos or stores it as XMP sidecars alongside raw format photos.

Contact us

HQ Switzerland
+41 44 722 7444
info@u-blox.com

China
+86 10 68 133 545
info_cn@u-blox.com

EMEA
+41 44 722 7444
info@u-blox.com

Japan
+81 3 5775 3850
info_jp@u-blox.com

Americas
+1 703 483 3180
info_us@u-blox.com

Korea
+82 02 542 0861
info_kr@u-blox.com

APAC – Singapore
+65 6734 3811
info_ap@u-blox.com

Taiwan
+886 2 2657 1090
info_tw@u-blox.com